

URN CONTENTS

J1466

associated urn

5882

year.area.locus p.basket prelim phase

79.1.176 5882

measure x

y

z

∅

group

quantity

registry UNWORKED BONE

material

category unknown

form unknown

condition fragmentary

X1346

associated urn

331

5882

year.area.locus p.basket prelim phase

79.1.176

measure x 0.0180

y 0.0180

z 0.0280

∅

group

quantity 1

registry URN CONTENTS

material ivory

category pendant

form double-feline seal

condition

X1347

associated urn

332

5882

year.area.locus p.basket prelim phase

79.1.176

measure x 0.0410

y 0.0040

z 0.0280

∅

group

quantity 1

registry URN CONTENTS

material ivory

category plaque

form bull

condition

X1348A

associated urn

333A

5882

year.area.locus p.basket prelim phase

79.1.176

measure x 0.0140

y 0.0250

z

∅

group

quantity 1

registry URN CONTENTS

material cowrie shell

category bead

form *Cypraea annulus*

condition

URN CONTENTS

X1348B

333B

associated urn

5882

year.area.locus p.basket prelim phase

79.1.176

measure x 0.0170

y 0.0120

z

∅

quantity 2

registry URN CONTENTS

material cowrie shell

category bead

form *Cypraea annulus*

condition



X1349

334

associated urn

5882

year.area.locus p.basket prelim phase

79.1.176

measure x

y

z 0.0040

∅ 0.0160

quantity 1

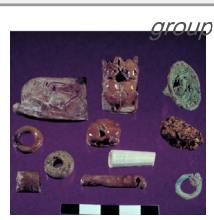
registry URN CONTENTS

material limestone

category ring

form annular

condition



X1350

335

associated urn

5882

year.area.locus p.basket prelim phase

79.1.176

measure x

y

z 0.0080

∅ 0.0150

quantity 1

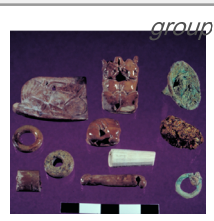
registry URN CONTENTS

material stone

category bead

form annular

condition



X1351

336

associated urn

5882

year.area.locus p.basket prelim phase

79.1.176

measure x 0.0150

y 0.0250

z 0.0100

∅

quantity 1

registry URN CONTENTS

material glass

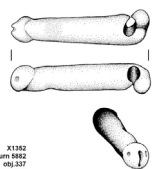
category bead

form bead

condition



URN CONTENTS



X1352
urn 5882
492.257
79.1.176

X1352 **337**

associated urn **5882**

year.area.locus p.basket prelim phase

79.1.176

measure *x*

y

z 0.0320

\emptyset 0.0080

quantity 1

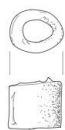
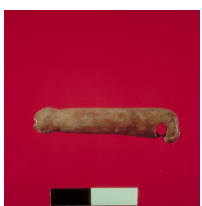
registry URN CONTENTS

material ivory

category pendant

form phallus

condition



X1353
urn 5882
492.257
79.1.176

X1353 **338**

associated urn **5882**

year.area.locus p.basket prelim phase

79.1.176

measure *x*

y

z 0.0120

\emptyset 0.0100

quantity 1

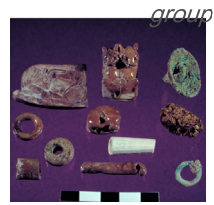
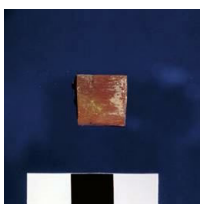
registry URN CONTENTS

material faience

category bead

form cylindrical

condition broken



X1354
urn 5882
492.257
79.1.176

X1354 **339**

associated urn **5882**

year.area.locus p.basket prelim phase

79.1.176

measure *x*

y

z 0.0240

\emptyset 0.0100

quantity 1

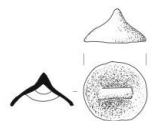
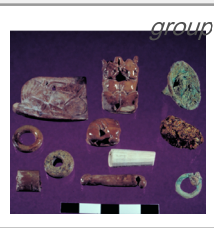
registry URN CONTENTS

material faience

category bead

form tubular

condition



X1355
urn 5882
492.257
79.1.176

X1355 **340**

associated urn **5882**

year.area.locus p.basket prelim phase

79.1.176

measure *x*

y

z 0.0160

\emptyset 0.0270

quantity 1

registry URN CONTENTS

material Cu (copper)

category

form Cu alloy ornament

condition



URN CONTENTS

X1356 **341**

associated urn **5882**

year.area.locus p.basket prelim phase

79.1.176

measure x 0.0150

y 0.0170

z 0.0100

∅

quantity 1

registry URN CONTENTS

material ivory

category pendant

form lioness

condition

group



X1357 **342**

associated urn **5882**

year.area.locus p.basket prelim phase

79.1.176

measure x

y

z 0.0025

∅ 0.0150

quantity 1

registry URN CONTENTS

material Cu (copper)

category

form copper alloy ring

condition

group



X1358 **343**

associated urn **5882**

year.area.locus p.basket prelim phase

79.1.176

measure x 0.0020

y 0.0060

z

∅

quantity 1

registry URN CONTENTS

material Au (gold)

category sheet

form foil

condition crumpled

group



X1359

associated urn **5882**

year.area.locus p.basket prelim phase

79.1.176

measure x

y

z

∅

quantity

registry URN CONTENTS

material

category

form

condition

group



URN CONTENTS

X1360

associated urn **5882**

year.area.locus *p.basket* *prelim phase*

79.1.176

measure *x*

y

z

ø

group

quantity 1

registry URN CONTENTS

material bone

category

form

condition